

PARISI

INWALL CISTERNS  
+ PUSH PLATES



# INWALL CISTERNS

## MECHANICAL 90MM INWALL CISTERN

NEW

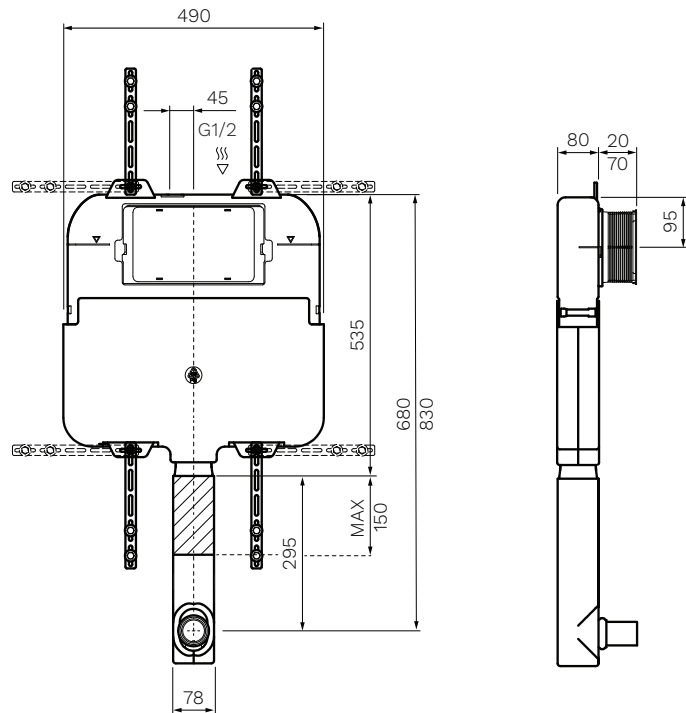
NO FRAME  
FOR BTW PANS  
REQUIRES PUSH PLATE  
WELS 4 STAR  
CODE: PA110



## PNEUMATIC 90MM INWALL CISTERN

NEW

NO FRAME  
FOR BTW PANS  
REQUIRES PUSH PLATE  
WELS 4 STAR  
CODE: PA111



## FEATURES

- Weight tested to 400kg
- Easily maintained
- Parts easily replaced and available
- Pneumatic or mechanical operation
- Multiple design options for push panels
- Designer coloured push panel options
- All maintenance is through the front panel with no special access panel required unless you are isolating the push panel (Pneumatic)
- Front flush
- Remote installation with up to 3 metres for Pneumatic push panels
- WELS 4 star rating 4.5/3L 3.3L average flush
- Material: High density polyethylene
- Wall fixing kit included
- Multiple fixation points for the installer
- All fixations and plumbing pipework supplied to install to the soil pipe



## FULL FRAME MECHANICAL 90MM INWALL CISTERN

NEW

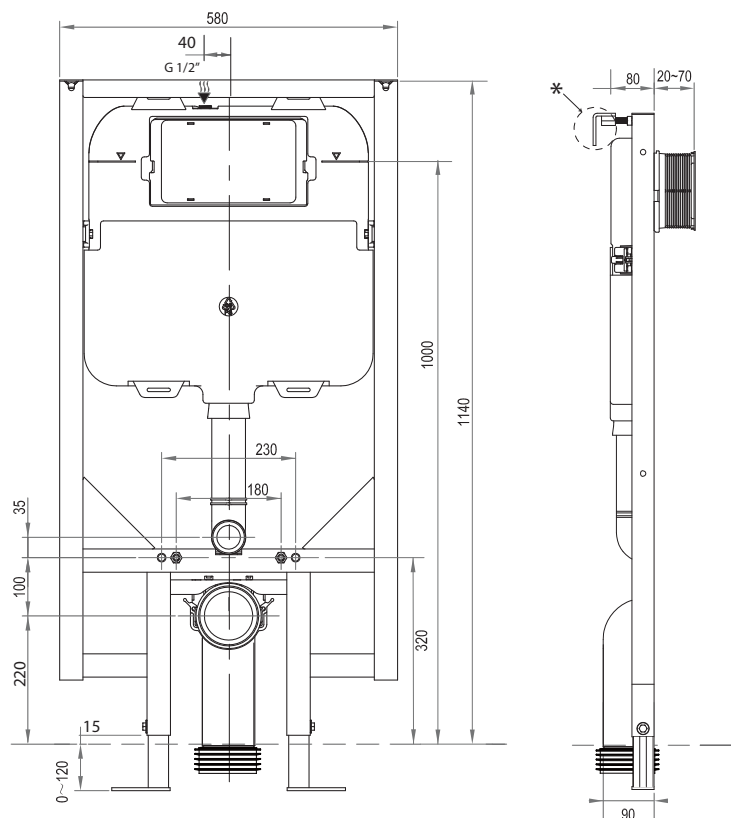
FULL FRAME  
FOR WALL HUNG PANS  
REQUIRES PUSH PLATE  
WELS 4 STAR  
CODE: PA120










## FULL FRAME PNEUMATIC 90MM INWALL CISTERN

NEW

FULL FRAME  
FOR WALL HUNG PANS  
REQUIRES PUSH PLATE  
WELS 4 STAR  
CODE: PA121



## PUSH PLATE COMPATIBILITY TABLE

				
	MECHANICAL PA110	PNEUMATIC PA111	MECHANICAL PA120	PNEUMATIC PA121
 TWIN BUTTON		✓		✓
 TONDO	✓		✓	
 BLADE	✓		✓	



# PUSH PLATES

When using the pneumatic option and installing the inwall cistern into a 90mm cavity:

- The cistern can be reversed so the maintenance panel can be in a different room or closet.
- Maximum distance from cistern is 3000mm.
- Installer will need to fabricate the flush pipe if installed remotely.



FIVE YEAR  
GUARANTEE\*

## PNEUMATIC

### TWIN BUTTON



CHROME:  
PA241.02



BRUSHED NICKEL:  
PA241.04



GUN METAL:  
PA241.29



BLACK/BLACK GLASS:  
PA244.13



BRUSHED BRASS:  
PA241.07

## MECHANICAL

### TONDO



CHROME:  
PA221.02



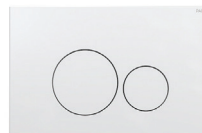
BRUSHED NICKEL:  
PA221.04



GUN METAL:  
PA221.29



MATT BLACK:  
PA221.13



GLOSS WHITE:  
PA221.10



BRUSHED BRASS:  
PA221.07

### BLADE



CHROME:  
PA231.02



BRUSHED NICKEL:  
PA231.04



GUN METAL:  
PA231.29



MATT BLACK:  
PA231.13



GLOSS WHITE:  
PA231.10



BRUSHED BRASS:  
PA231.07

\*All guarantees are subject to terms and conditions and available on request or can be viewed at: [www.robertson.co.nz/warranties](http://www.robertson.co.nz/warranties)

## PARISI

Parisi's vision has always been to create and curate a harmonious blend of design and quality, as well as a positive contribution to living well. Parisi's Italian supplier partners are world leaders in design, innovation and manufacturing.

Distributed by

**robertson**<sup>®</sup>  
BATHWARE  
— SINCE 1987 —

PH: +64 (0)9 573 0490  
FAX: +64 (0)9 573 0495  
EMAIL: [sales@robertson.co.nz](mailto:sales@robertson.co.nz)

AUCKLAND  
25 Vestey Drive, Mt Wellington

WELLINGTON  
23 Marion St, Te Aro

CHRISTCHURCH  
Home Ideas, 37 Mandeville St  
Riccarton

**ROBERTSON.CO.NZ**